

ARCHITECTURA
One-Piece Toilet, EL
5697UC01

Product Features

- Vitreous china one-piece toilet
- Chair-height (16-1/2"), square bowl
- Anti-microbial, stain-resistant glaze
- 12" (305mm) rough-in

Flushing System

- High-performance, gravity flush
- 1.28 gallons (4.8 liters) per flush - EPA WaterSense, high-efficiency toilet (HET)
- Open bowl rim
- Fully glazed, 2-1/8" internal trapway
- Oversized 3" flush valve

Accessories Included

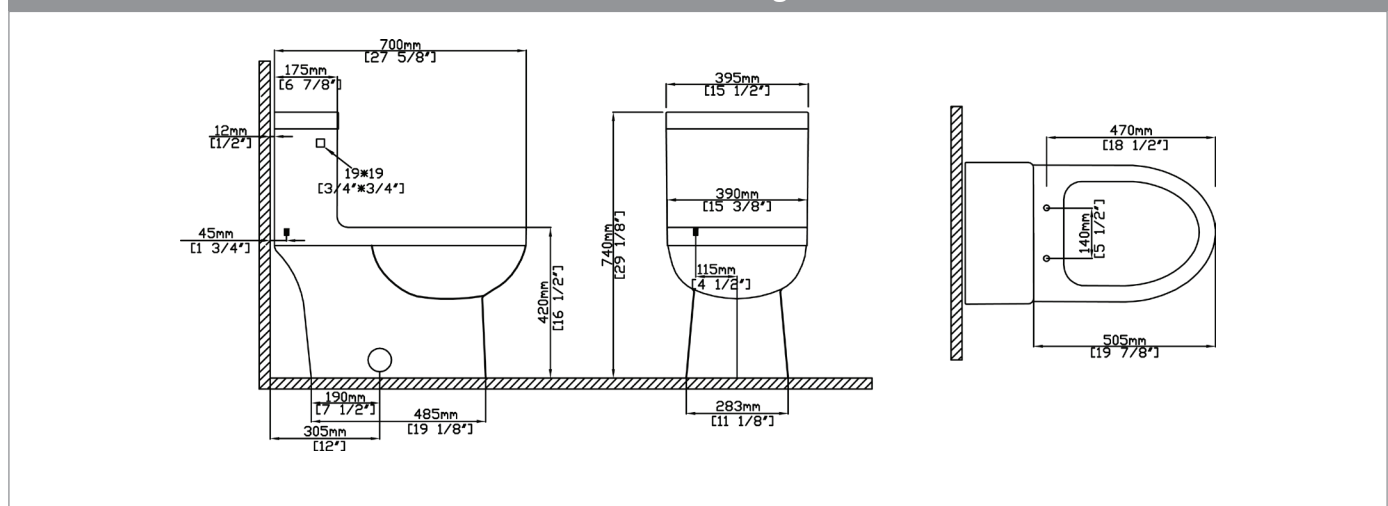
- Soft-closing, quick-release seat and cover
- Solid metal trip lever, Polished Chrome finish
- Bolt alcove cover tiles (set of 2)

Quality Assurance

- Factory flush-tested
- Limited lifetime product warranty



Dimensional Diagram



IMPORTANT: Dimensions are nominal and may vary within the range of tolerance per NSI Standard A112.19.2. These measurements are subject to change. No responsibility is assumed for use of superseded or voided pages.

PRODUCT OPTIONS & PARTS

Glaze Color Options



White .01

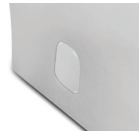
Replacement Parts

Seat



S-232.01

Floor Bolt
Covers



MC-300.01

Fill Valve:	VL-5801
Flush Valve:	VH-5801.16
Flapper:	9400.580.01
Tank Lid:	N-5250.01
Seat Bolt Set:	SB-242-S.01

Tank Lever Options



F-74 (*Standard)

.500 Polished Chrome*	.01 White Enamel
.502 Polished Nickel	.05 Matte Black
.503 Satin Nickel	
.514 Satin Brass	

Metal Finish Options



Polished
Chrome
.500



Polished
Nickel
.502



Satin
Nickel
.503



Satin
Brass
.514



White
Enamel
.01



Matte
Black
.05

Compliance Certifications

- ASME A112.19.2M
- CSA B45.1



Meets the Americans With Disabilities Act (ADA) guidelines and ANSI A117.1 requirements for accessible building facilities. Check local codes.

Replacement Parts

Please contact Icera Customer Service at service@icerausa.com or by phone at 855-444-2372 for after-purchase support and information on replacement parts.